

ALTOGETHER CONVINCING  
SANITARY TECHNOLOGY.

(GABAG)

3D

# GABAG FLEXZARGE® SCHNITTSCHUTZ® 3D CUT-PROTECTING MATERIAL

THE WATERTIGHT  
SOUNDPROOFING SOLUTION  
IN THE THIRD DIMENSION

DAS ORIGINAL

THE  
PERFECT  
SOLUTION FOR  
CORNERS

## INSTALLATION SITUATION: BATHTUB WITH NICHE FILLER OR LEDGE EXTENSION

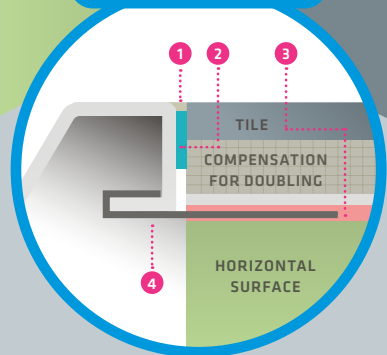
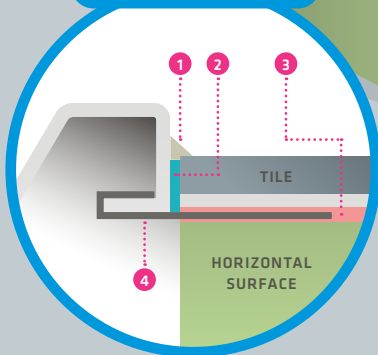
As usual, the components of GABAG FLEXZARGE® SCHNITTSCHUTZ® 3D CUT-PROTECTING MATERIAL are pre-assembled in our factory. This makes installation extremely simple. The horizontal sealing strip and the soundproofing profile are each prefabricated

in the appropriate lengths for the FLEXZARGE® and are included in the delivery. This eliminates complicated sealing procedures with separate sealing corners, measuring and drawing in tile thicknesses on the tub or tray edge, and other time-consuming tasks!

EXAMPLE OF INSTALLATION SITUATION: BATHTUBS WITH STORAGE SURFACE (NO. 1)

VERSION 1  
JOINT BETWEEN TILE  
AND TUB/TRAY EDGE

VERSION 2  
FLUSH JOINT BETWEEN  
TILE AND TUB/TRAY EDGE



1 SILICONE JOINT

3 COMPOSITE SEAL

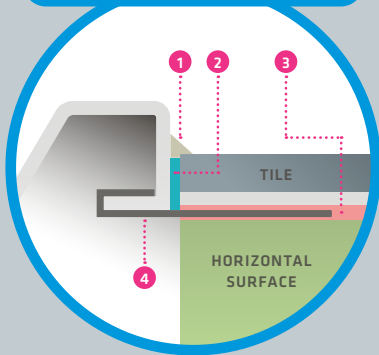
2 SOUNDPROOFING PROFILE  
BACKFILL SECTION

4 HORIZONTAL SEALING STRIP

# INSTALLATION SITUATION: FLOOR-LEVEL SHOWER

EXAMPLE OF INSTALLATION  
SITUATION: SHOWER TRAY TILE  
TO TRAY EDGE (NO. 2)

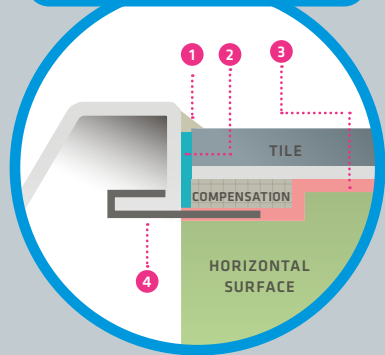
RECOMMENDED VERSION 1  
JOINT BETWEEN TILE AND  
SHOWER TRAY EDGE



1 SILICONE JOINT

2 SOUNDPROOFING PROFILE  
BACKFILL SECTION

VERSION 2  
JOINT BETWEEN TILE AND EDGE  
OF SHOWER TRAY



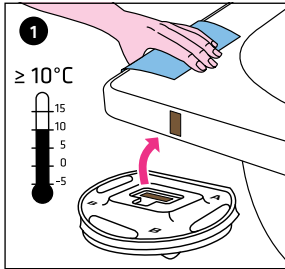
3 COMPOSITE SEAL

4 HORIZONTAL SEALING STRIP

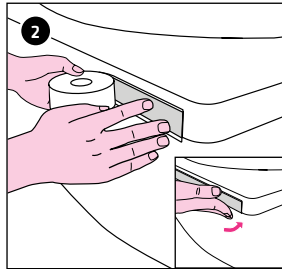
# INSTALLATION INSTRUCTIONS FOR GABAG FLEXZARGE® SCHNITTSCHUTZ® 3D CUT-PROTECTING MATERIAL

**IMPORTANT NOTE:** THE NICHE DIMENSION (BASE PLASTER / BASE PLASTER) MUST BE NO MORE THAN 1 CM LARGER THAN THE TUB/TRAY DIMENSION (DEPENDING ON THE TILE THICKNESS)

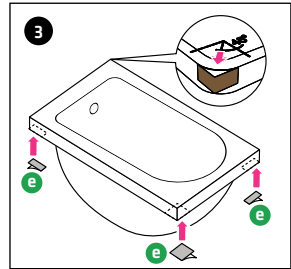
## PREPARATION



1 Rub the tub/tray edge thoroughly with a (moist) cleaning cloth, leave to air for 3 minutes and wipe off with a dry cloth; use an adhesive test strip to check whether the adhesive sticks. Do not use on sensitive surfaces.



2 Apply the butyl strip (supplied with the product) in one piece, flush with the upper edge of the tub/tray. Apply it around the radius at the edge of the tub/tray. Only fit the butyl strip where GABAG FLEXZARGE® will be applied later on. Place the butyl strip under the tub/tray edge and press everything together firmly. Pull the protective film off.

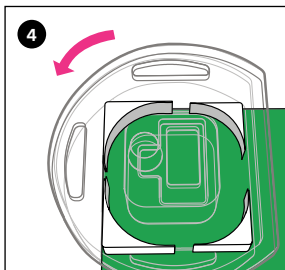


3 Depending on the installation situation, apply the corner connection pieces **E** below the tub/tray edge and press them on firmly.

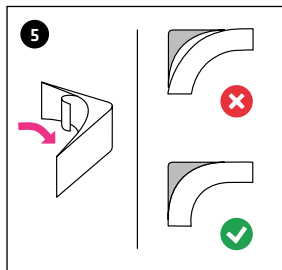
**Corner connection piece 30×30 mm** (transition from FLEXZARGE® to horizontal sealing strip)

**Corner connection piece 50×30 mm** (transition from horizontal sealing strip to horizontal sealing strip)

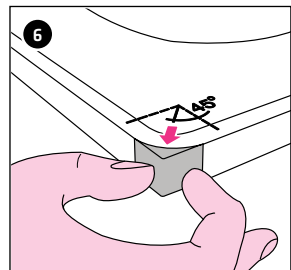
Note example installation situation (no. 1)



4 Each set contains two pairs of corner compensation profiles, A for a small tub/tray radius and B for a large radius.

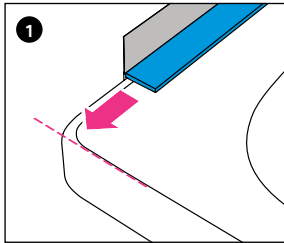


5 Select the corner compensation profile that matches the tub/tray edge. The corner profile must be flush with the tub/tray edge. Remove the covering film on the inner side.

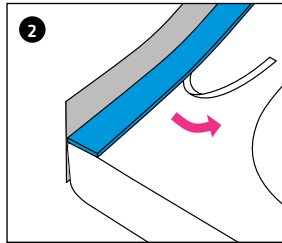


6 Apply the corner compensation profile to the edge of the tub/tray at an angle of 45°, only where the FLEXZARGE® will be applied later on. Remove the covering film on the outer side.

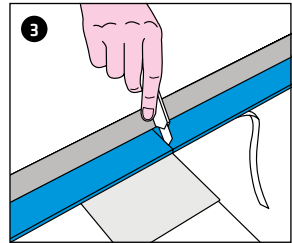
## INSTALLING FLEXZARGE® SCHNITTSCHUTZ® 3D CUT-PROTECTING MATERIAL



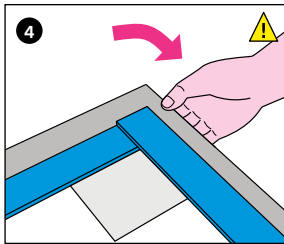
1 Hold GABAG FLEXZARGE® at a 90° angle to the tub/tray edge. FLEXZARGE® must be flush with the tub/tray edge.



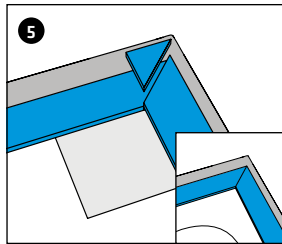
2 Pull the covering paper off from the underside and press the FLEXZARGE® onto the tub/tray.



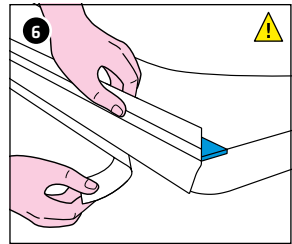
3 Using the cutter, make an incision into the blue soundproofing profile at the edge of the tub/tray. Place a piece of cardboard underneath for protection.



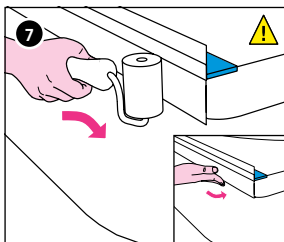
4 Position the FLEXZARGE® so that it fits squarely around the corner profile.




5 Mitre-cut the blue soundproofing profile, remove any remaining pieces and the tub/tray edge guard, and continue to install the soundproofing profile.



6 Pull the adhesive strip/covering film away from the grey butyl strip.



7 Using the back of your hand or a GABAG application roller, press the FLEXZARGE® firmly onto the edge of the tub/tray, paying special attention to the corners. Affix any projecting butyl strip under the edge of the tub/tray.

 Due to the integrated metallic insert, the start and end of the flexible frame are very sharp and there is a risk of injury. Use an application roller to press on the tub/tray edge sealing strip. The application roller and scissors are available from GABAG.

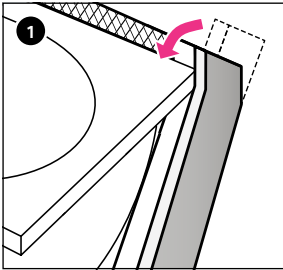
### VIDEO



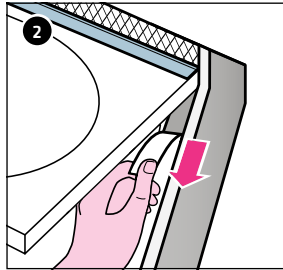
VIEW THE INSTALLATION INSTRUCTIONS FOR GABAG FLEXZARGE® SCHNITTSCHUTZ® 3D CUT-PROTECTING MATERIAL AS A VIDEO AT

[LINK WWW.GABAG.COM/FZ-3D-DE](http://WWW.GABAG.COM/FZ-3D-DE)

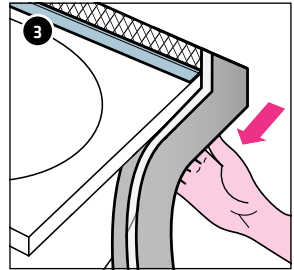
**INSTALLING THE HORIZONTAL SEALING STRIP - GABAG FLEXZARGE®  
SCHNITTSCHUTZ® 3D CUT-PROTECTING MATERIAL**



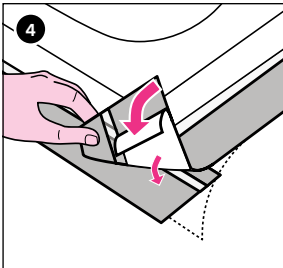
Install the horizontal sealing strip and soundproofing profile



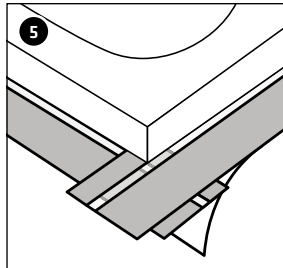
Pull the adhesive strip cover tape away from the narrow grey adhesive and fit flush with the upper edge of the GABAG FLEXZARGE®. Pull off the same area of FLEXZARGE® cover tape.



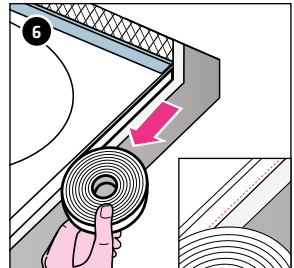
Fit the narrow grey adhesive flush under the tub/tray edge and press it on firmly.



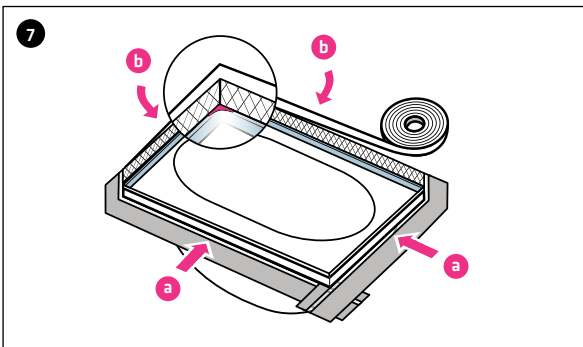
Follow steps 1 to 5 of the installation procedure for all surfaces that require horizontal sealing. Detach the cover strip from the wide grey adhesive.



Press the adhesives on the overlaps that are created firmly together and bond them.



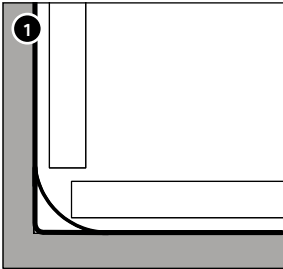
Fit the white soundproofing profile (3×30 mm, perforated) **a** onto the curved tub/tray surround at the horizontal seal. Perforation at the bottom.



Fit the white soundproofing profile (1×15 mm) **b** on the rear side of the FLEXZARGE®.

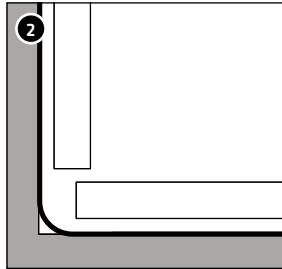


## DETAILS FOR TILERS: GABAG FLEXZARGE® SCHNITTSCHUTZ® 3D CUT-PROTECTING MATERIAL VERTICAL JOINT



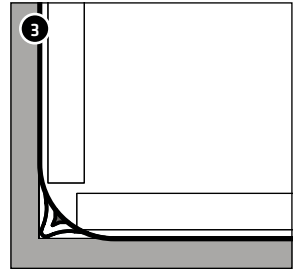
### INSTALLATION VERSION WITH CORNER PROFILE

On tub/tray corners with a radius of more than 13 mm to 25 mm, there will be an adhesive bed of about 2 – 3 mm depending on the thickness of the tiles, installation situation and niche dimension.



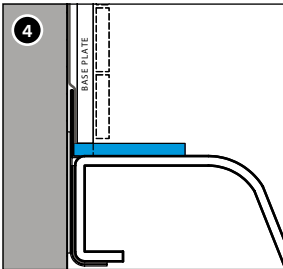
### INSTALLATION VERSION WITHOUT CORNER PROFILE AND CRIMP

On tub/tray corners with a radius of up to 5 mm, no crimp is required, depending on the installation situation and niche dimension. Depending on the tile thickness, there will be an adhesive bed of 2 – 3 mm.



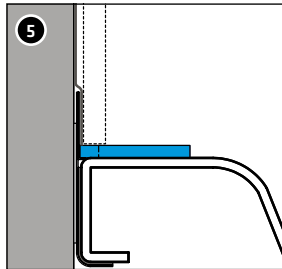
### INSTALLATION VERSION WITH CRIMP

On tub/tray corners with a radius of less than 13 mm, there will be an adhesive bed of 2 – 3 mm depending on the thickness of the tiles.



### DETAIL: SMALL TILES, MOSAIC OR COVERINGS, TILE DIMENSION < 20 MM

Glue a base plate over the entire area of the GABAG FLEXZARGE® or onto the wall.



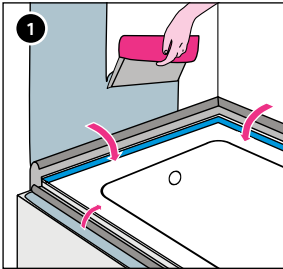
### DETAIL: NORMAL TILES OR MOSAIC ≥ 20 MM

Depending on the tile thickness and installation version, apply an adhesive bed of approx. 2 – 3 mm (see Figure 1 or Figures 2 and 3). For mosaic tiles ≥ 20 mm, please note our information at [www.gabag.com](http://www.gabag.com) regarding constructional requirements and possible detail structures.

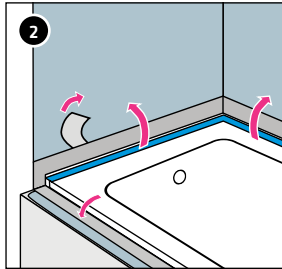


# INTRODUCING THE GABAG FLEXZARGE® INTO THE COMPOSITE SEAL

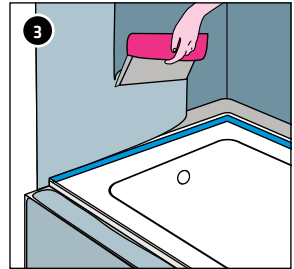
INFORMATION FOR SEALING TECHNICIANS OR TILERS



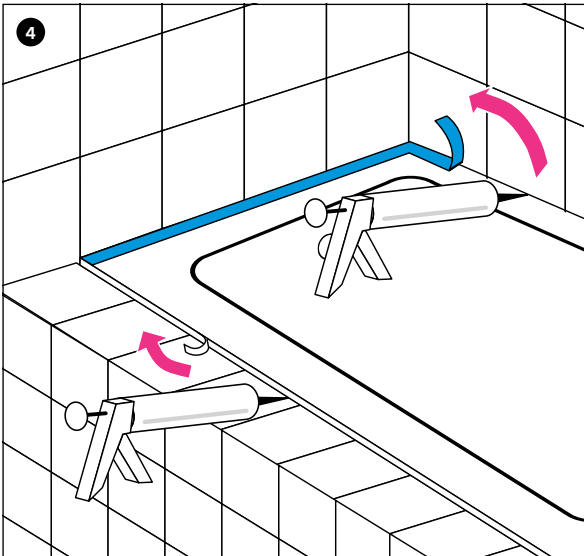
1 Fold the sealing strip down towards the tub/tray and apply the composite seal to the wall.



2 Pull off the cover paper on the rear of the sealing strip and bond it to the dried composite seal. Apply the sealing strip to the seal so that it is flat, with no air trapped inside.



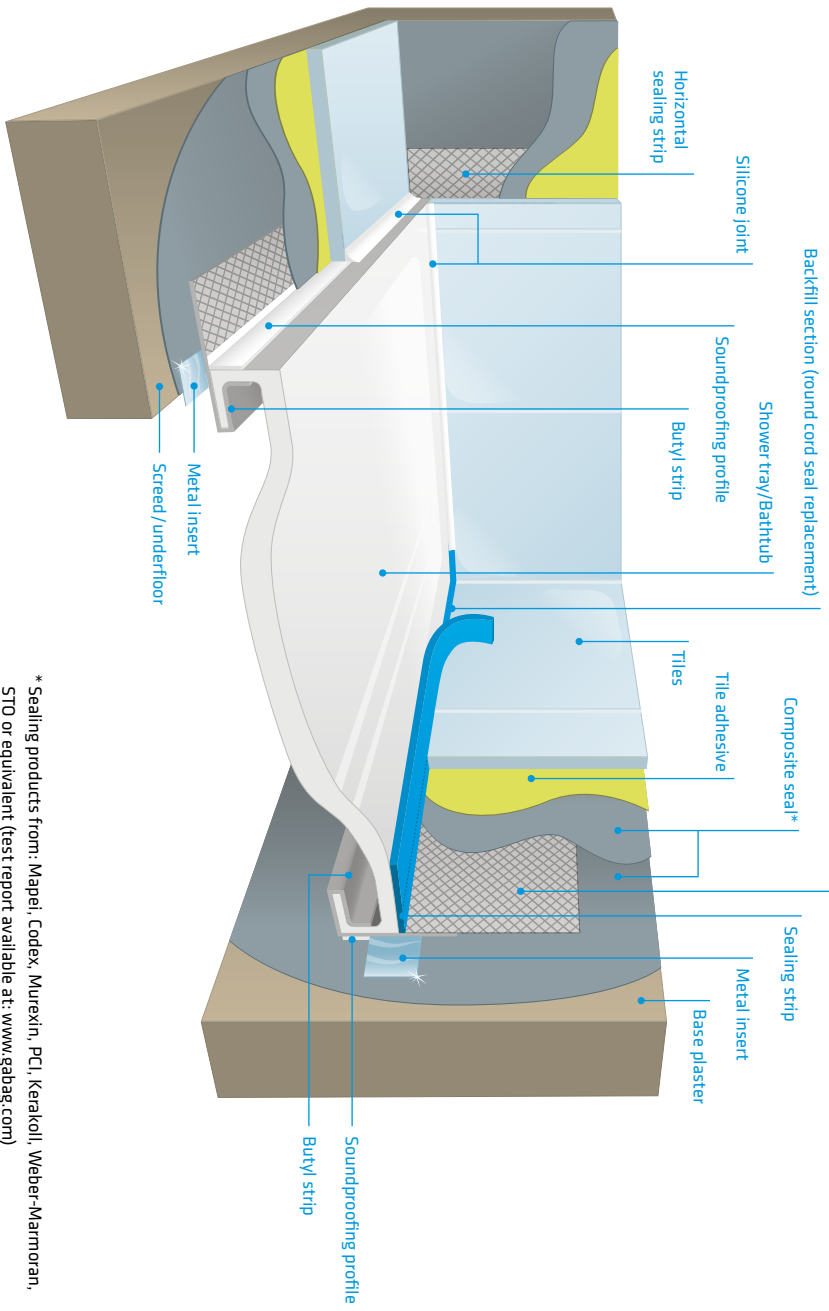
3 Apply the second layer of composite seal on top of the affixed sealing strip.



4 After tiling, pull off the perforated blue/white tub/tray edge guard profile and prepare the joint with silicone (e.g. Ottoseal® S100 or equivalent) to an adequate width. The remaining piece is used as joint backfill (round cord seal) and to absorb sound.

THE RESPONSIBLE SPECIALIST MUST CHECK THE CONDITION AND QUALITY OF THE BASE SURFACES ON THE WALL SIDE AND MUST PRE-TREAT THESE SURFACES AS APPROPRIATE.

# GABAG FLEXARGE® SCHNITTSCHUTZ® 3D CUT-PROTECTING MATERIAL



\* Sealing products from: Mapei, Codex, Murexin, PCI, Kerakoll, Weber-Marmoran, STO or equivalent (test report available at: [www.gabag.com](http://www.gabag.com))

## IMPORTANT INFORMATION FOR PLANNERS AND ARCHITECTS



Bath tubs and shower trays must be installed stably. We recommend the GABAG supporting frame because it does not shrink and it guarantees compliance with the stricter soundproofing requirements; also, features such as ledge extensions can be pre-assembled ex factory as per customers' requirements. Installation systems with deflection or shrinkage of over 2 mm should be avoided.

### CAUSES OF INSUFFICIENT INITIAL ADHESIVE STRENGTH:

- ▶ Tub/tray is too cold (minimum temperature: +10 degrees) Tub edge is wet (e.g. due to condensation) or dirty (dust, grease film, etc.).
- ▶ Adhesive strip on the GABAG FLEXZARGE® is dirty/wet.
- ▶ If the grey adhesive is dirty, the FLEXZARGE® must not be fitted.
- ▶ If there are special coatings on tubs/trays (such as "Clean-Effekt", "Glasur-Plus" or similar products), the relevant surface to be sealed must be pre-treated.

### IMPORTANT INFORMATION ON STORAGE AND INSTALLATION:

- ▶ In particular, do not allow the adhesive to become dirty.
- ▶ Avoid direct sunlight.
- ▶ Store in a dry and dust-free location.
- ▶ Storage temperature: +10 to +30 °C
- ▶ **IMPORTANT:** Do not glue offcuts together!
- ▶ Before installation, clean the curved tub surround with a cleaning cloth (to remove any dust, grease and moisture) and wipe down with a dry cloth. On sensitive surfaces, first carry out a compatibility test at an invisible point. Take note of the processing information.
- ▶ Tubs and trays must be installed stably. Take note of the current information sheets from professional

associations and trade guilds.

- ▶ Before applying silicone, weigh the tub down (using a weight) or by filling the tub. Take account of any shrinkage (due to the underfloor or screed and method of installing the tub/tray).
- ▶ If necessary, the lateral seals on the framing system must be installed by the tiler or fitter.
- ▶ No incisions must ever be made in the GABAG FLEXZARGE®. The integrated metal insert is an additional safety feature to prevent the tub/tray sealing strip from being damaged by cutting during renewal of the silicone joint. Major impacts may also damage or cut through the metal insert which, in turn, can cause leaks. A flat, smooth adhesive area of at least 15 mm is required for the horizontal sealing strip. If less than 15 mm, or for acrylic trays/tubs, please contact GABAG.

### ALSO NOTE THE FOLLOWING WARNINGS:

- ▶ GABAG FLEXZARGE® must solely be used as a seal for the tub/tray edge.
- ▶ Ensure that the silicone joint is sufficiently wide. The silicone joint and its maintenance fall within the responsibility of the specialist companies that execute the work or of the client/building owner.
- ▶ GABAG Produktions und Vertriebs Ltd accepts no liability for loss or damage due to incorrectly installed or damaged GABAG FLEXZARGE®, in case of failure to maintain a faulty silicone joint or in case of use of the product for improper purposes and instances of negligence.

ALTOGETHER CONVINCING  
SANITARY TECHNOLOGY.



DE

UNSERE BROSCHÜREN FINDEN SIE IN FRANZÖSISCH  
UND ITALIENISCH AUF [WWW.GABAG.COM](http://WWW.GABAG.COM)

FR

NOTRES BROCHURES EN ALLEMAND ET ITALIEN  
VOUS TROUVEZ AUSSI SUR [WWW.GABAG.COM](http://WWW.GABAG.COM)

IT

NOSTRI BROCHURI IN TEDESCO E FRANCESE SI  
TROVANO ANCHE SU [WWW.GABAG.COM](http://WWW.GABAG.COM)

### GABAG FLEXZARGE® SCHNITTSCHUTZ® 3D CUT-PROTECTING MATERIAL

8002.320	<b>2.0</b> linear metres	8002.338	<b>3.8</b> linear metres
8002.325	<b>2.5</b> linear metres	8002.340	<b>4.0</b> linear metres
8002.330	<b>3.0</b> linear metres	8002.345	<b>4.5</b> linear metres
8002.334	<b>3.4</b> linear metres	8002.348	<b>4.8</b> linear metres
8002.336	<b>3.6</b> linear metres	8002.310	<b>10.0</b> linear metres



#### ROUTE DESCRIPTION

TAKE THE KÜSSNACHT EXIT FROM THE AUTOBAHN;  
AT THE FIRST ROUNDABOUT, TAKE THE EXIT ON THE RIGHT  
(SIGNPOSTED TO FÄNN); AT THE SECOND ROUNDABOUT,  
GO STRAIGHT AHEAD; TURN RIGHT FOR "FÄNN OST";  
OUR PREMISES ARE ABOUT 150 METRES FURTHER ON THE RIGHT.

WELCOME!

VISIT OUR ON-SITE SHOWROOM.  
(PLEASE NOTIFY US IN ADVANCE)

GABAG PRODUKTIONS  
UND VERTRIEBS LTD

ALTE ZÜGERSTRASSE 12  
6403 KÜSSNACHT AM RIGI

TELEPHONE +41 41 854 46 64  
FAX +41 41 854 46 65

INFO@GABAG.COM  
WWW.GABAG.COM

V-05-Z1