

ALTOGETHER CONVINCING
SANITARY TECHNOLOGY.

(GABAG)

3D

GABAG FLEXZARGE® SCHNITTSCHUTZ® 3D CUT-PROTECTING MATERIAL

THE WATERTIGHT
SOUNDPROOFING SOLUTION
IN THE THIRD DIMENSION

DAS ORIGINAL

THE PERFECT
SOLUTION FOR
CORNERS

GABAG FLEXZARGE® SCHNITTSCHUTZ® 3D CUT-PROTECTING MATERIAL THE WATERTIGHT SOUNDPROOFING SOLUTION IN EVERY DIMENSION

Yet again! GABAG FLEXZARGE® SCHNITTSCHUTZ® 3D CUT-PROTECTING MATERIAL, the latest innovative invention from GABAG: the new addition to the range of GABAG FLEXZARGE® sealing solutions for specific installation situations. GABAG FLEXZARGE® SCHNITTSCHUTZ® 3D CUT-PROTECTING MATERIAL: the reliable edge seal for floor-level shower trays and bathtubs or whirlpool tubs with storage surfaces.

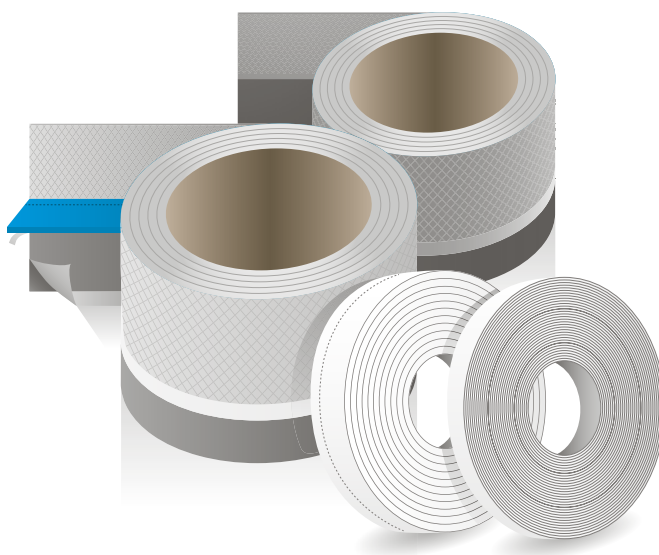
The horizontal sealing strip included in the set was specially developed for this purpose. It ensures a clean seal for horizontal transitions from the bathtub onto a storage surface and for joints between the tub/tray edge and the floor. The tiler uses this joint as the connection point for surface sealing. The high-grade soundproofing profile (also included) ensures optimal isolation between the tub/tray and the tiles or the building structure.

The flexible SCHNITTSCHUTZ® CUT-PROTECTING MATERIAL frame strip also offers the usual, reliable secondary seal around the tub/tray edges and provides the connection point for the complete wall seal.

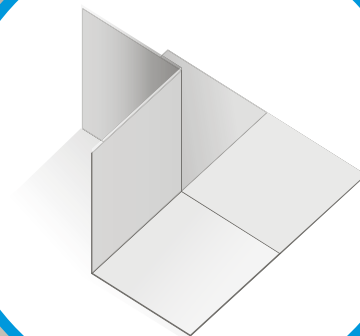
GABAG FLEXZARGE® SCHNITTSCHUTZ® 3D CUT-PROTECTING MATERIAL – the ideal solution whenever a perfect seal is needed between vertical and horizontal surfaces!

MEETS THE SOUNDPROOFING REQUIREMENTS OF STANDARD SIA 181

ROOM CONFIGURATION	INCREASED REQUIREMENT
Bathroom/Bathroom	✓
Bathroom/Bedroom	✓



**OPTIONAL ACCESSORY
3D SEALING CORNER**



THIS SEAL KEEPS ITS PROMISES.



15 YEARS OF EXPERIENCE

Vast experience and an awareness of ever-stricter construction requirements are the key factors behind the intelligent solutions that GABAG has offered for decades, covering every aspect of bathtub, whirlpool tub and shower installation. GABAG FLEXZARGE®, the ORIGINAL tub/tray sealing strip, is a highly popular, tried-and-tested product that has been in use for over 15 years. Over the years, the flexible frame strip from GABAG has been consistently developed and improved on the basis of practical experience and with the help of construction experts.



SIMPLE TO INSTALL

GABAG FLEXZARGE® 3D is tear-resistant, creates little added bulk and can be applied simply and quickly in just a few simple steps to all tub/tray edges made of steel enamel, plastic, chromium-plated steel, glass-reinforced plastic, cast iron or ceramic material. Discriminating customers, professionals and experts all know that GABAG FLEXZARGE® is delivered in prefabricated form from our factory in Küsnacht am Rigi. This product eliminates the typical factors that create uncertainty – such as separate soundproofing, capillary and tub/tray edge guard profiles or round cord seals that have to be added to the construction. That's why installation with the tub/tray sealing profile from GABAG is simpler and faster.



STATE OF THE ART

As stated in the codes of practice of the Swiss Association of Painters and Plasterers, the Swiss Tile Association (SPV) and Suissetec (the Swiss Building Services Association), the use of FLEXZARGE® is recommended – with good reason. Even the German Real Estate Professional Association (IVD), in its Code of Practice No. 3 Part 1, defines what a standard-compliant seal should look like and specifies flexible frame strip as a requirement. Yet again, GABAG has confirmed its status as an innovator in the sanitary sector with its Schnittschutz® cut-protection material – a product that redefines the state of the art for tub/tray edge sealing profiles.



SWISS MADE

GABAG strongly advocates social security for its employees; for decades, we have manufactured all our products in Küsnacht am Rigi – evidence of our support for Switzerland as a location. GABAG FLEXZARGE® is a hand-crafted product manufactured by experts. Visit our factory and see for yourself!

What's more, our Swiss Made policy benefits not only our own employees, but also our numerous Swiss suppliers.



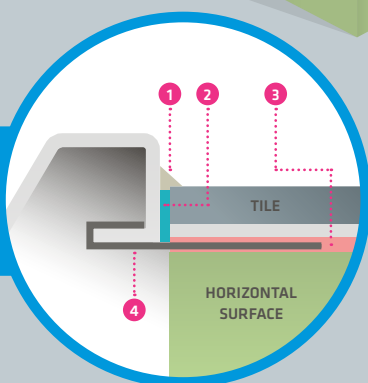
INSTALLATION SITUATION: BATHTUB WITH NICHE FILLER OR LEDGE EXTENSION

As usual, the components of GABAG FLEXZARGE® SCHNITTSCHUTZ® 3D CUT-PROTECTING MATERIAL are pre-assembled in our factory. This makes installation extremely simple. The horizontal sealing strip and soundproofing profile are each prefabricated in the appropriate

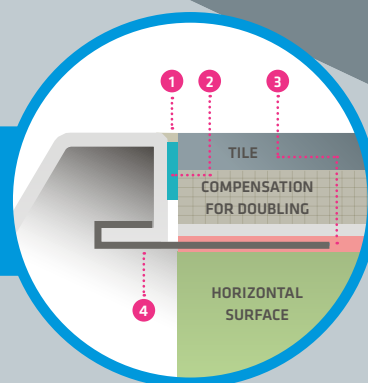
lengths for the FLEXZARGE® and are included in the delivery. This eliminates complicated sealing procedures with separate sealing corners, measuring and drawing in tile thicknesses on the tub or tray edge, and other time-consuming tasks!

EXAMPLE OF INSTALLATION SITUATION: BATHTUBSWITH STORAGE SURFACE (NO. 1)

VERSION 1 JOINT BETWEEN TILE AND TUB/TRAY EDGE



VERSION 2 JOINT BETWEEN TILE AND TUB/TRAY EDGE (FLUSH)

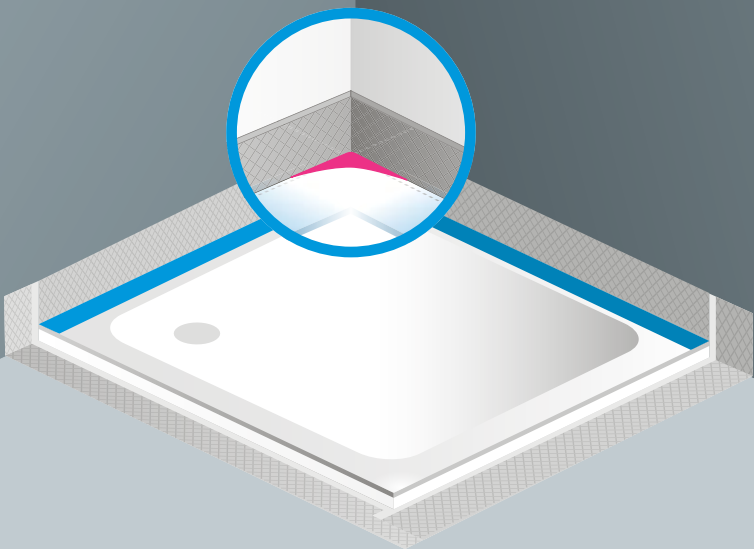


- 1 SILICONE JOINT
- 2 SOUNDPROOFING PROFILE BACKFILL SECTION

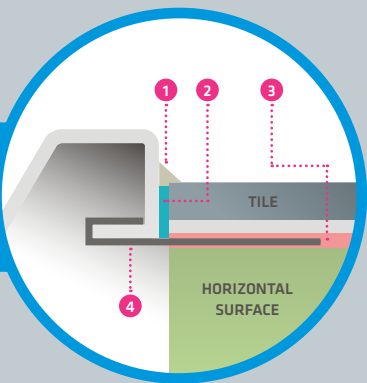
- 3 COMPOSITE SEAL
- 4 HORIZONTAL SEALING STRIP

INSTALLATION SITUATION:
FLOOR-LEVEL SHOWER

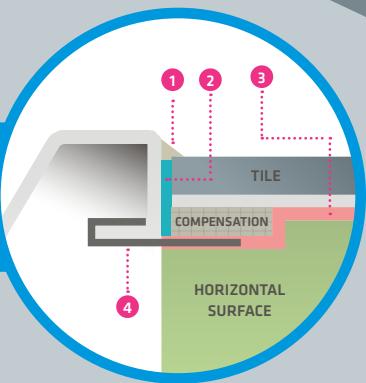
EXAMPLE OF INSTALLATION
SITUATION FOR SHOWER TRAY
TILE TO TRAY EDGE (NO. 2)



VERSION 1
(RECOMMENDED)
JOINT BETWEEN TILE
AND EDGE OF
SHOWER TRAY



VERSION 2
JOINT BETWEEN
TILE AND EDGE
OF SHOWER TRAY



1 SILICONE JOINT

2 SOUNDPROOFING PROFILE
BACKFILL SECTION

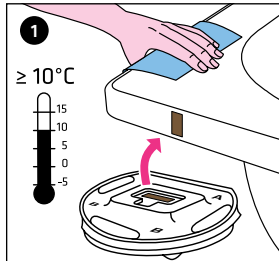
3 COMPOSITE SEAL

4 HORIZONTAL SEALING STRIP

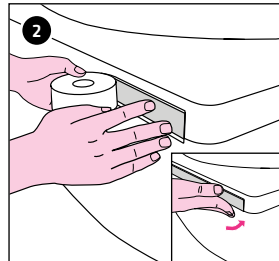
INSTALLATION INSTRUCTIONS FOR GABAG FLEXZARGE® SCHNITTSCHUTZ® 3D CUT-PROTECTING MATERIAL

IMPORTANT NOTE: THE NICHE DIMENSION (BASE PLASTER / BASE PLASTER) MUST BE NO MORE THAN 1 CM LARGER THAN THE TUB/TRAY DIMENSION (DEPENDING ON THE TILE THICKNESS)

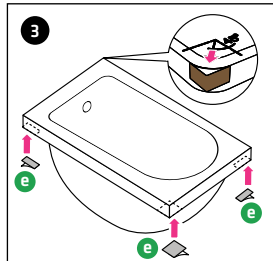
PREPARATION



Rub the tub/tray edge thoroughly with a (moist) cleaning cloth, leave to air for 3 minutes and wipe off with a dry cloth: use an adhesive test strip to check whether the adhesive sticks. Do not use on sensitive surfaces.



Apply the butyl strip (supplied with the product) in one piece, flush with the upper edge of the tub/tray. Apply it around the radius at the edge of the tub/tray. Only fit the butyl strip where the GABAG FLEXZARGE® will be applied later on. Place the butyl strip under the tub/tray edge and press everything together firmly. Remove the protective film.

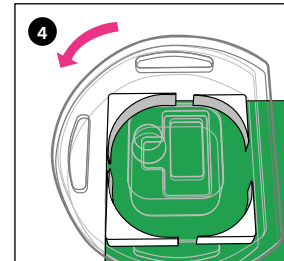


Depending on the installation situation, apply the corner connection pieces **e** below the tub/tray edge and press them on firmly.

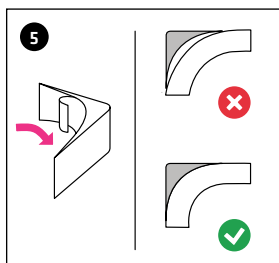
Corner connection piece 30×30 mm
(transition from FLEXZARGE® to horizontal sealing strip)

Corner connection piece 50×30 mm
(transition from horizontal sealing strip to horizontal sealing strip)

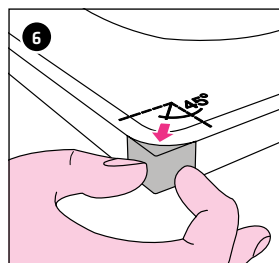
Note the example installation situation (no. 1)



Each set contains two pairs of corner compensation profiles, A for a small tub/tray radius and B for a large radius.



Select the corner compensation profile that matches the tub/tray edge. The corner profile must be flush with the tub/tray edge. Remove the covering film on the inner side.



Apply the corner compensation profile to the edge of the tub/tray at an angle of 45°, only where the FLEXZARGE® will be applied later on. Remove the covering film on the outer side.



Due to the integrated metallic Schnittschutz® cut-protection material, the start and end of the flexible frame are very sharp and there is a risk of injury. Use an application roller to press on the tub/tray edge sealing strip. The application roller and scissors are available from GABAG.

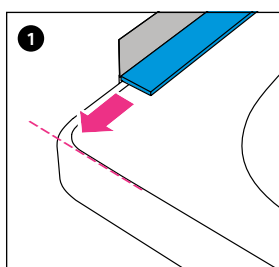
VIDEO



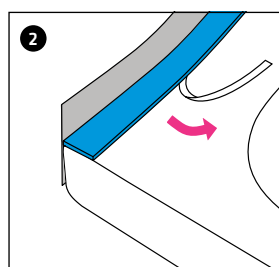
INSTALLATION INSTRUCTIONS FOR GABAG FLEXZARGE® SCHNITTSCHUTZ® 3D CUT-PROTECTING MATERIAL ARE AVAILABLE AS A VIDEO AT:

[LINK WWW.GABAG.COM/FZ-3D-DE](http://WWW.GABAG.COM/FZ-3D-DE)

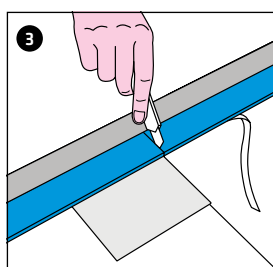
INSTALLING FLEXZARGE® SCHNITTSCHUTZ® 3D CUT-PROTECTING MATERIAL



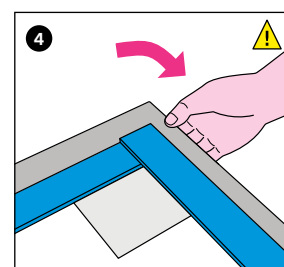
Hold GABAG FLEXZARGE® at a 90° angle to the tub/tray edge. The FLEXZARGE® must be flush with the tub/tray edge.



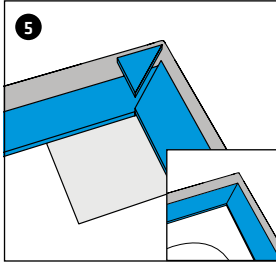
Pull the covering paper off from the underside and press the FLEXZARGE® onto the tub/tray.



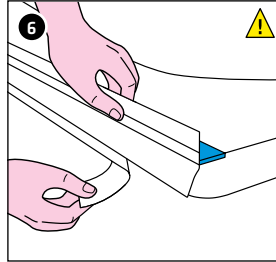
Using the cutter, make an incision into the blue soundproofing profile at the edge of the tub/tray. Place a piece of cardboard underneath for protection.



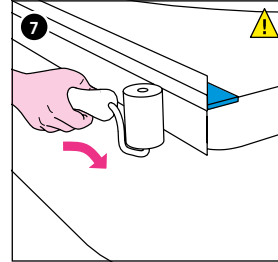
Position the FLEXZARGE® so that it fits squarely around the corner profile.



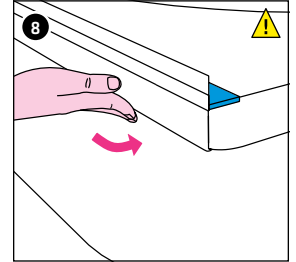
Mitre-cut the blue soundproofing profile, remove any remaining pieces and the tub/tray edge guard, and continue to install the soundproofing profile.



Pull the adhesive strip/covering film away from the grey butyl strip.

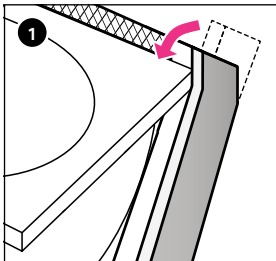


Using the back of your hand or a GABAG application roller, press the FLEXZARGE® firmly onto the edge of the tub/tray, paying special attention to the corners.

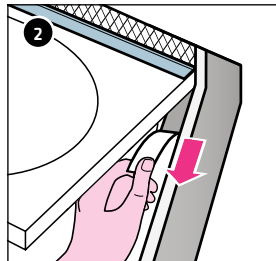


Affix any projecting butyl strip under the edge of the tub/tray.

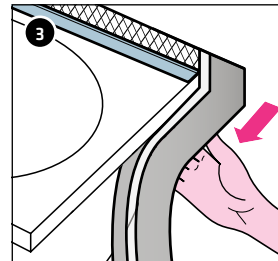
INSTALLING THE HORIZONTAL SEALING STRIP – GABAG FLEXZARGE® SCHNITTSCHUTZ® 3D CUT-PROTECTING MATERIAL



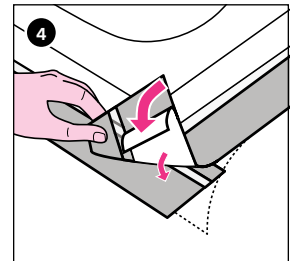
Install the horizontal sealing strip and soundproofing profile.



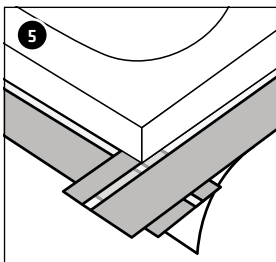
Pull the adhesive strip cover tape away from the narrow grey adhesive and fit flush with the upper edge of the GABAG FLEXZARGE®. Pull off the same area of FLEXZARGE® cover tape.



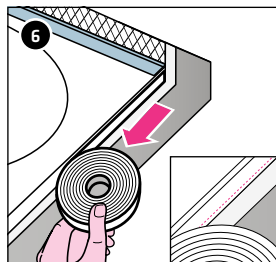
Fit the narrow grey adhesive flush under the tub/tray edge and press it on firmly.



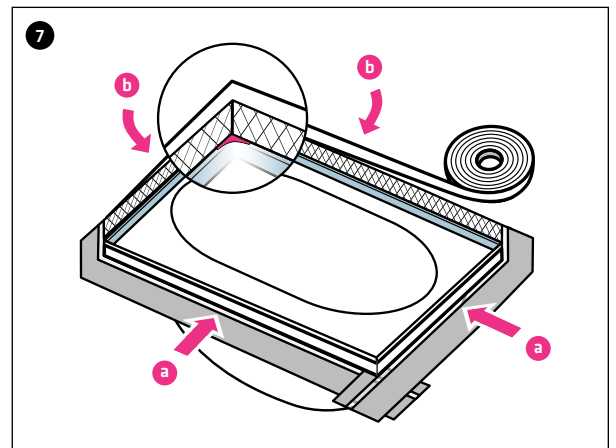
Follow steps 1 to 5 of the installation procedure for all surfaces that require horizontal sealing. Detach the cover strip from the wide grey adhesive.



Press the adhesives on the overlaps that are created firmly together and bond them.

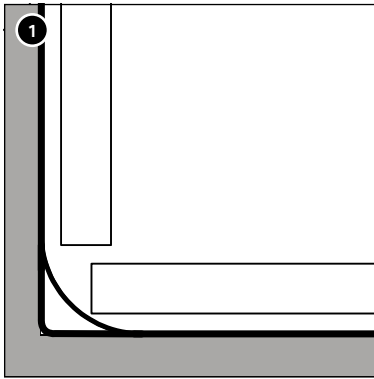


Fit the white soundproofing profile (3x30 mm, perforated) **a** onto the curved tub/tray surround, at the horizontal seal. Perforation at the bottom.



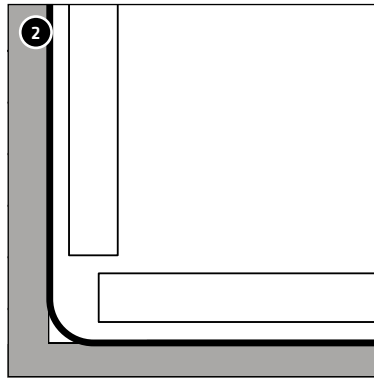
Fit the white soundproofing profile (1x15 mm) **b** on the rear side of the FLEXZARGE®.

DETAILS FOR TILERS: GABAG FLEXZARGE® SCHNITTSCHUTZ® 3D CUT-PROTECTING MATERIAL VERTICAL JOINT



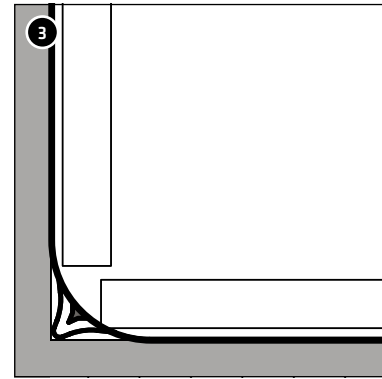
INSTALLATION VERSION WITH CORNER PROFILE

On tub/tray corners with a radius of more than 13 mm to 25 mm, there will be an adhesive bed of about 2–3 mm depending on the thickness of the tiles, installation situation and niche dimension.



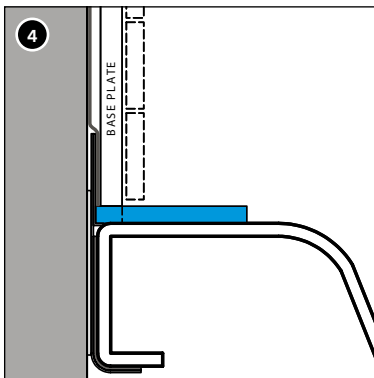
INSTALLATION VERSION WITHOUT CORNER PROFILE AND CRIMP

On tub/tray corners with a radius of up to 5 mm, no crimp is required, depending on the installation situation and niche dimension. Depending on the tile thickness, there will be an adhesive bed of 2–3 mm.



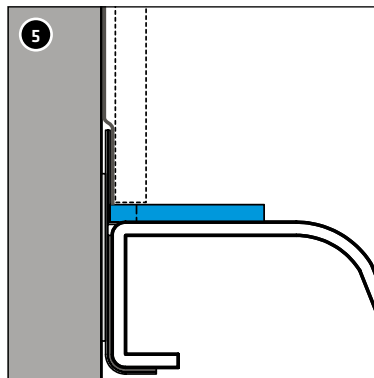
INSTALLATION VERSION WITH CRIMP

On tub/tray corners with a radius of less than 13 mm, there will be an adhesive bed of 2–3 mm depending on the thickness of the tiles.



DETAIL: SMALL TILES, MOSAIC OR COVERINGS, TILE DIMENSION: < 20 MM

Glue a base plate over the whole area of the GABAG FLEXZARGE® or onto the wall.

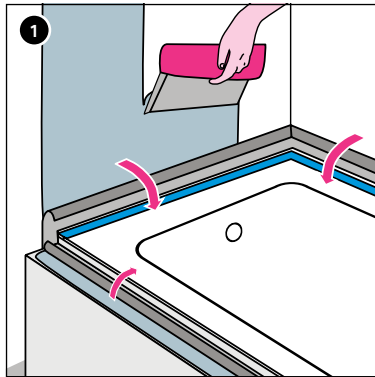


DETAIL: NORMAL TILES OR MOSAIC ≥ 20 MM

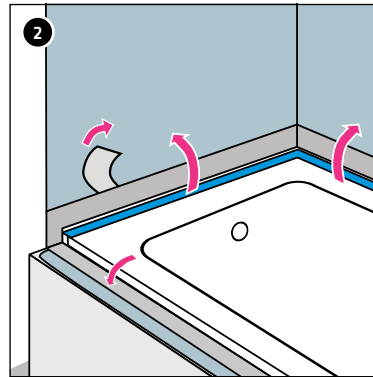
Depending on the tile thickness, apply an adhesive bed of approx. 2–3 mm, according to the installation version (see Figure 1 or Figures 2 and 3 respectively). For mosaic tiles ≥ 20 mm, please note our information at www.gabag.com regarding constructional requirements and possible detail structures.

INTRODUCING THE GABAG FLEXZARGE® INTO THE COMPOSITE SEAL

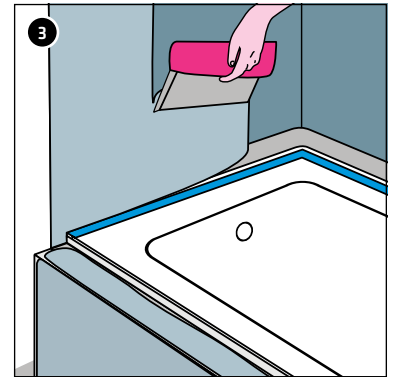
INFORMATION FOR SEALING TECHNICIANS OR TILERS



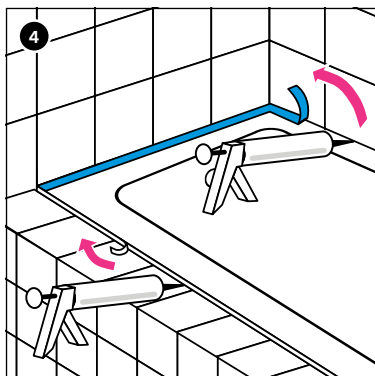
1 Fold the sealing strip down towards the tub/tray and apply the composite seal to the wall.



2 Pull off the cover paper on the rear of the sealing strip and bond it to the dried composite seal. Apply the sealing strip to the seal so that it is flat, with no air trapped inside.



3 Apply the second layer of composite seal on top of the affixed sealing strip.



4 After tiling, pull off the perforated blue tub/tray edge guard profile and prepare the joint with silicone (e.g. Ottoseal® S100 or equivalent) to an adequate width. The remaining piece is used as joint backfill (round cord seal) and to absorb sound.

IMPORTANT INFORMATION FOR PLANNERS AND ARCHITECTS



Bath tubs and shower trays must be installed stably. We recommend the GABAG supporting frame because it does not shrink, it guarantees compliance with the stricter soundproofing requirements; also, features such as ledge extensions can be pre-assembled ex factory as per customers' requirements. Installation systems with deflection or shrinkage of over 2 mm should be avoided.

ALTOGETHER CONVINCING
SANITARY TECHNOLOGY.



DE UNSERE BROSCHÜREN FINDEN SIE IN
FRANZÖSISCH UND ITALIENISCH AUF
WWW.GABAG.COM

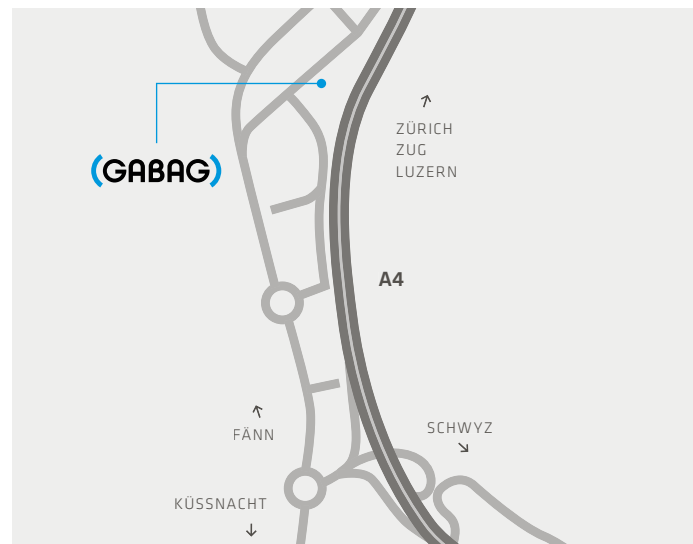
FR NOTRES BROCHURES EN ALLEMAND
ET ITALIEN VOUS TROUVEZ AUSSI SUR
WWW.GABAG.COM

IT NOSTRI BROCHURI IN TEDESCO E
FRANCESE SI TROVANO ANCHE SU
WWW.GABAG.COM

GABAG FLEXZARGE® SCHNITTSCHUTZ® 3D CUT-PROTECTING MATERIAL

8002.320	2.0	linear metres
8002.325	2.5	linear metres
8002.330	3.0	linear metres
8002.334	3.4	linear metres
8002.336	3.6	linear metres

8002.338	3.8	linear metres
8002.340	4.0	linear metres
8002.345	4.5	linear metres
8002.348	4.8	linear metres
8002.310	10.0	linear metres



ROUTE DESCRIPTION

TAKE THE KÜSSNACHT EXIT FROM THE AUTOBAHN;
AT THE FIRST ROUNDABOUT, TAKE THE EXIT ON THE RIGHT (SIGNPOSTED
TO FÄNN); AT THE SECOND ROUNDABOUT, GO STRAIGHT AHEAD;
TURN RIGHT FOR "FÄNN OST"; OUR PREMISES ARE ABOUT 150 METRES
FURTHER ON THE RIGHT.

WELCOME!

VISIT OUR ON-SITE SHOWROOM.
(PLEASE NOTIFY US IN ADVANCE)