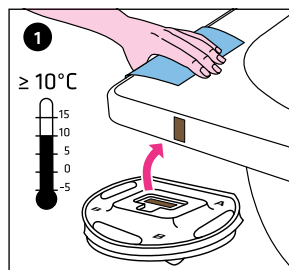


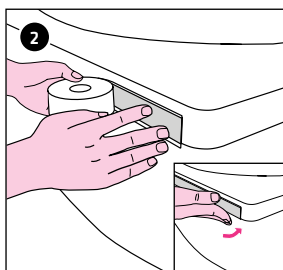
# **INSTALLATION INSTRUCTIONS FOR GABAG FLEXZARGE® SCHNITTSCHUTZ® 3D CUT-PROTECTING MATERIAL**

**IMPORTANT NOTE:** THE NICHE DIMENSION (BASE PLASTER / BASE PLASTER) MUST BE NO MORE THAN 1 CM LARGER THAN THE TUB/TRAY DIMENSION (DEPENDING ON THE TILE THICKNESS)

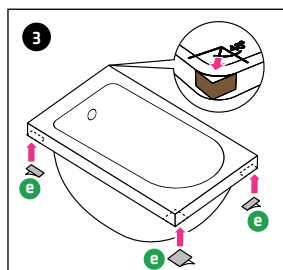
## **PREPARATION**



Rub the tub/tray edge thoroughly with a (moist) cleaning cloth, leave to air for 3 minutes and wipe off with a dry cloth; use an adhesive test strip to check whether the adhesive sticks. Do not use on sensitive surfaces.



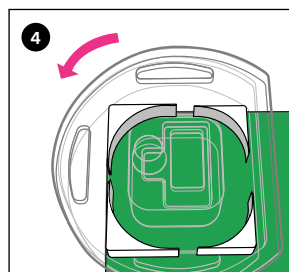
Apply the butyl strip (supplied with the product) in one piece, flush with the upper edge of the tub/tray. Apply it around the radius at the edge of the tub/tray. Only fit the butyl strip where GABAG FLEXZARGE® will be applied later on. Place the butyl strip under the tub/tray edge and press everything together firmly. Pull the protective film off.



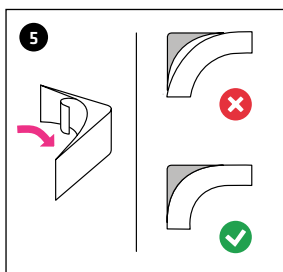
Depending on the installation situation, apply the corner connection pieces **e** below the tub/tray edge and press them on firmly.

**Corner connection piece 30×30 mm** (transition from FLEXZARGE® to horizontal sealing strip)

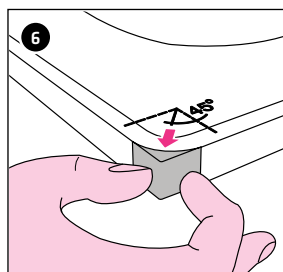
**Corner connection piece 50×30 mm** (transition from horizontal sealing strip to horizontal sealing strip)  
Note example installation situation (no. 1)



Each set contains two pairs of corner compensation profiles, A for a small tub/tray radius and B for a large radius.

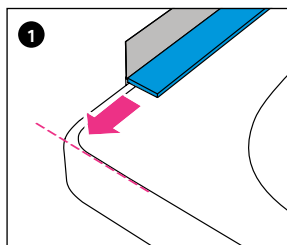


Select the corner compensation profile that matches the tub/tray edge. The corner profile must be flush with the tub/tray edge. Remove the covering film on the inner side.

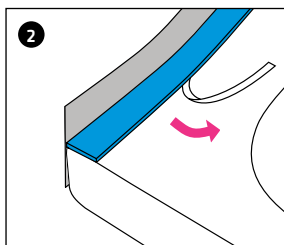


Apply the corner compensation profile to the edge of the tub/tray at an angle of 45°, only where the FLEXZARGE® will be applied later on. Remove the covering film on the outer side.

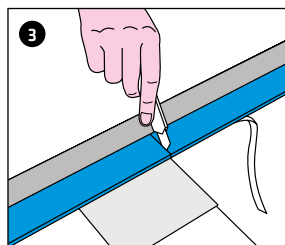
## INSTALLING FLEXZARGE® SCHNITTSCHUTZ® 3D CUT-PROTECTING MATERIAL



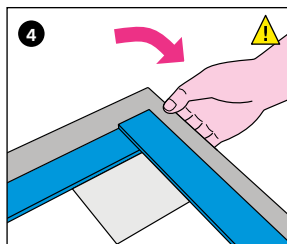
Hold GABAG FLEXZARGE® at a 90° angle to the tub/tray edge. FLEXZARGE® must be flush with the tub/tray edge.



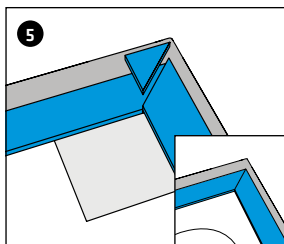
Pull the covering paper off from the underside and press the FLEXZARGE® onto the tub/tray.



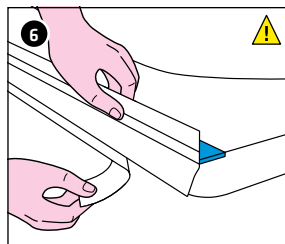
Using the cutter, make an incision into the blue soundproofing profile at the edge of the tub/tray. Place a piece of cardboard underneath for protection.



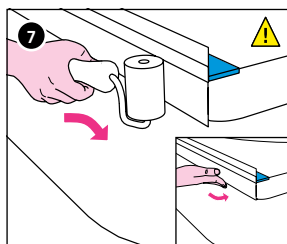
Position the FLEXZARGE® so that it fits squarely around the corner profile.



Mitre-cut the blue soundproofing profile, remove any remaining pieces and the tub/tray edge guard, and continue to install the soundproofing profile.



Pull the adhesive strip/covering film away from the grey butyl strip.



Using the back of your hand or a GABAG application roller, press the FLEXZARGE® firmly onto the edge of the tub/tray, paying special attention to the corners. Affix any projecting butyl strip under the edge of the tub/tray.



Due to the integrated metallic insert, the start and end of the flexible frame are very sharp and there is a risk of injury. Use an application roller to press on the tub/tray edge sealing strip. The application roller and scissors are available from GABAG.

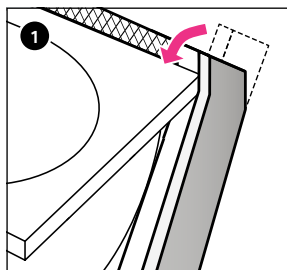
### VIDEO



VIEW THE INSTALLATION INSTRUCTIONS FOR GABAG FLEXZARGE® SCHNITTSCHUTZ® 3D CUT-PROTECTING MATERIAL AS A VIDEO AT

[LINK WWW.GABAG.COM/FZ-3D-DE](http://WWW.GABAG.COM/FZ-3D-DE)

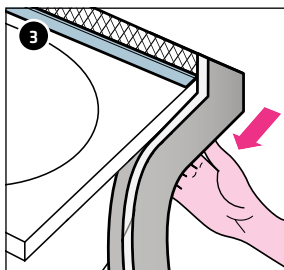
**INSTALLING THE HORIZONTAL SEALING STRIP - GABAG FLEXZARGE®  
SCHNITTSCHUTZ® 3D CUT-PROTECTING MATERIAL**



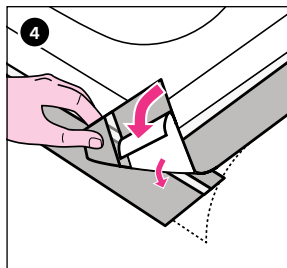
Install the horizontal sealing strip and soundproofing profile



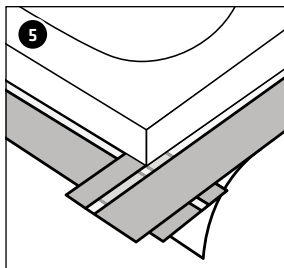
Pull the adhesive strip cover tape away from the narrow grey adhesive and fit flush with the upper edge of the GABAG FLEXZARGE®. Pull off the same area of FLEXZARGE® cover tape.



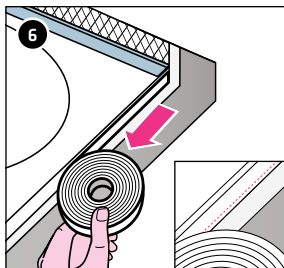
Fit the narrow grey adhesive flush under the tub/tray edge and press it on firmly.



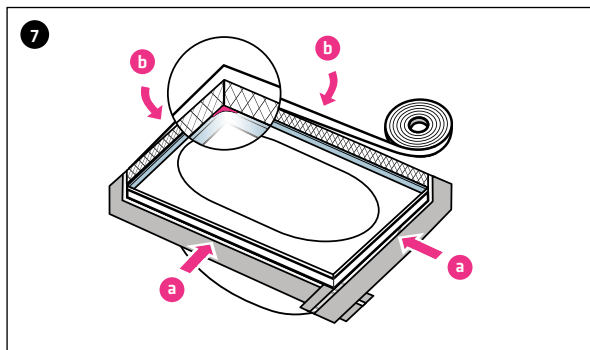
Follow steps 1 to 5 of the installation procedure for all surfaces that require horizontal sealing. Detach the cover strip from the wide grey adhesive.



Press the adhesives on the overlaps that are created firmly together and bond them.



Fit the white soundproofing profile (3x30 mm, perforated) **a** onto the curved tub/tray surround at the horizontal seal. Perforation at the bottom.



Fit the white soundproofing profile (1x15 mm) **b** on the rear side of the FLEXZARGE®.