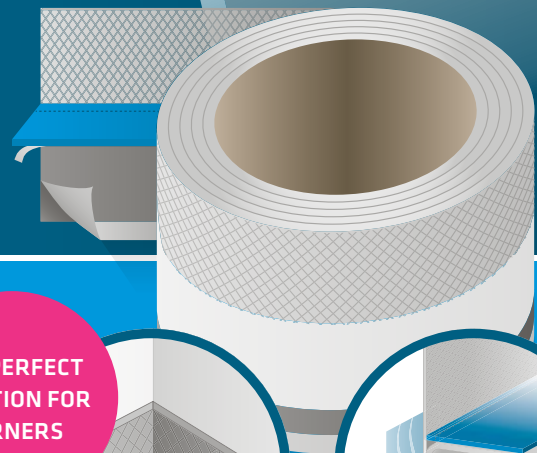


ALTOGETHER CONVINCING
SANITARY TECHNOLOGY.



GABAG FLEXZARGE[®] SCHNITTSCHUTZ[®] CUT-PROTECTING MATERIAL

WITH CORNER COMPENSATION
PROFILE



THE PERFECT
SOLUTION FOR
CORNERS



THIS SEAL KEEPS ITS PROMISES.



SCHNITTSCHUTZ® CUT-PROTECTING MATERIAL

Time after time, experts have stated their practical requirements for a flexible frame strip – and now GABAG FLEXZARGE® meets their needs. Thanks to the integrated metal insert, it's virtually impossible to cut through the tub/tray sealing strip when replacing the silicone joint. This means that the tub/tray edge seal remains permanently watertight after the silicone joint has been renewed. The FIRST PRODUCT OF ITS KIND IN THE WORLD – redefining the state of the art. Typically GABAG!



SOUNDPROOFING

GABAG FLEXZARGE® features an exclusive soundproofing profile that creates little added bulk – its composition ensures effective soundproofing that meets the stricter soundproofing requirements of standard SIA 181. Guaranteed soundproofing thanks to the popular patented backfill section (round cord seal), not only from the tub/tray to the wall and even under the curved surround but also from wall to tile. When it comes to soundproofing, FLEXZARGE® is fully comparable with standard commercially available soundproofing profiles. Tested many times over by EMPA (Swiss Federal Laboratories for Materials Science and Technology).



DURABLE SEALS

GABAG FLEXZARGE® is a durable sealing system for use around bathtub/shower tray edges. It is the only product to feature a 30-mm width of sealing adhesive that never dries out or becomes brittle. If a silicone joint becomes faulty, this system can prevent water damage until the joint can be repaired.

Thanks to its proven expansion range, it can absorb movements of the building structure averaging up to 8mm. Even if the level of the substructure, supporting frame or the floor is lowered, virtually no pressure is exerted on the tiles.



SYSTEM SOLUTION

Installed in ONE working step, the flexible frame strip developed by GABAG is a finished product that delivers a solution for all detailed connection issues.

- ▶ Sealing profile
- ▶ Tub/tray edge guard profile
- ▶ Backfill section (round cord seal replacement)
- ▶ Soundproofing profile
- ▶ Tile adhesive retaining/supporting profile
- ▶ Metal insert
- ▶ Fleece-laminated sealing strip for complete sealing of the wall (composite seal)
- ▶ Elastic expansion zone
- ▶ Corner compensation profile (new)

The great advantage: everything is pre-assembled in the factory, in one strip. Typically GABAG!

ROOM CONFIGURATION	INCREASED REQUIREMENT
Bathroom/ Bathroom	✓
Bathroom/ Bedroom	✓



15 YEARS OF EXPERIENCE

Vast experience and an awareness of ever-stricter construction requirements are the key factors behind the intelligent solutions that GABAG has offered for decades, covering every aspect of bathtub, whirlpool tub and shower installation. GABAG FLEXZARGE®, the ORIGINAL tub/tray sealing strip, is a highly popular, tried-and-tested product that has been in use for over 15 years. Over the years, flexible frame strip from GABAG has been consistently developed and improved on the basis of practical experience and with the help of construction experts.



SIMPLE TO INSTALL

GABAG FLEXZARGE® is tear-resistant, creates little added bulk and can be applied simply and quickly in just a few simple steps to all tub/tray edges made of steel enamel, plastic, chromium-plated steel, glass-reinforced plastic, cast iron or ceramic material. Discriminating customers, professionals and experts all know that GABAG FLEXZARGE® is delivered in fully prefabricated form from our factory in Küssnacht am Rigi. This product eliminates the potential factors that create uncertainty – such as separate soundproofing, capillary and tub/tray edge guard profiles or round cord seals that have to be applied to the construction. That's why installation with the tub/tray sealing profile from GABAG is simpler and faster.



STATE OF THE ART

As stated in the codes of practice of the Swiss Association of Painters and Plasterers, the Swiss Tile Association (SPV) and Suissetec (the Swiss Building Services Association), the use of FLEXZARGE® is recommended – with good reason. Even the German Real Estate Professional Association (IVD), in its Code of Practice No. 3 Part 1, defines what a standard-compliant seal should look like and specifies flexible frame strip as a requirement. Yet again, GABAG has confirmed its status as an innovator in the sanitary sector with its Schnitenschutz® cut-protection material – a product that redefines the state of the art for tub/tray edge sealing profiles.

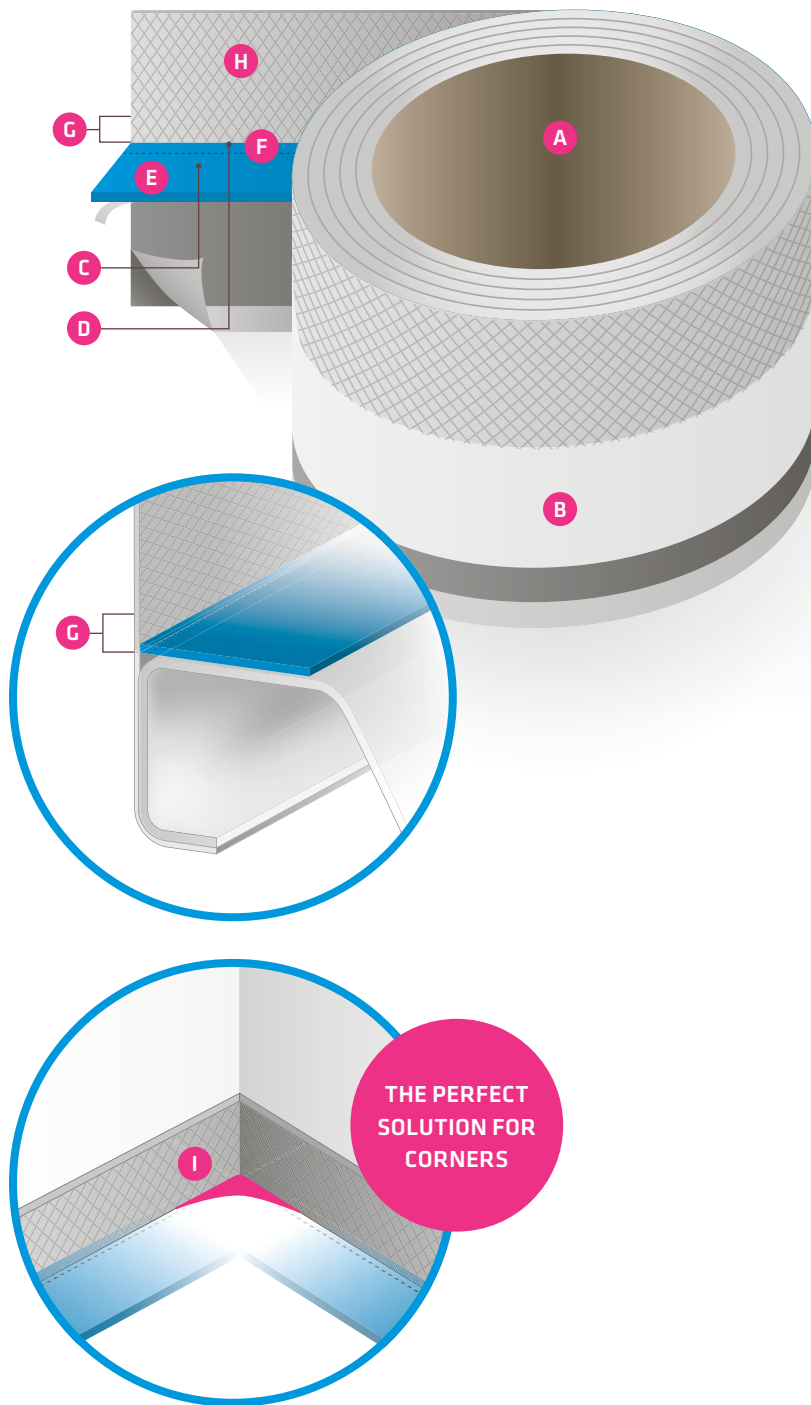


SWISS MADE

GABAG strongly advocates social security for its employees; for decades, we have manufactured all our products in Küssnacht am Rigi – evidence of our support for Switzerland as a location. GABAG FLEXZARGE® is a hand-crafted product manufactured by experts. Visit our factory and see for yourself!

What's more, our Swiss Made policy benefits not only our own employees, but also our numerous Swiss suppliers.

FLEXZARGE® SCHNITTSCHUTZ® CUT-PROTECTION MATERIAL: THE TRIED-AND-TESTED ALL-IN-ONE SOLUTION WITH A 15-YEAR TRACK RECORD



- A** GABAG FLEXZARGE®
Schnittschutz® cut-protecting
material (the first product of
its kind worldwide)

- B** including factory-preinstalled
soundproofing profile
(tub/tray → wall)

- C** including factory-preinstalled
soundproofing profile
(tub/tray → tile)

- D** including factory-preinstalled
tile adhesive retaining/support-
ing profile (the first product of
its kind worldwide)

- E** including factory-preinstalled
thick tub/tray edge guard profile

- F** including factory-preinstalled,
pre-perforated backfill section
(round cord seal replacement)

- G** including factory-integrated
elastic expansion zone (even
after tiling)

- H** including sealing strip (self-ad-
hesive) for a complete wall seal

- I** including corner compensation
profiles (the most perfect,
safest and most professional
solution for corners)

GABAG FLEXZARGE® - THE ORIGINAL
RECOMMENDED BY THE SWISS PAINTERS AND PLASTERERS
ASSOCIATION, THE SWISS TILERS ASSOCIATION, AND SUISSE-
TEC, THE SWISS BUILDING SERVICES ASSOCIATION!

SCOPE OF DELIVERY / INSTALLATION
STEP GABAG FLEXZARGE® SCHNITTSCHUTZ®
CUT-PROTECTING MATERIAL



**INSTALLATION INSTRUCTIONS
FOR INSTALLERS AND TILERS**



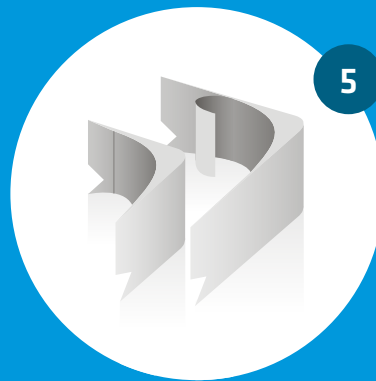
**HANDY MOIST CLEANING
AND DRYING CLOTH**



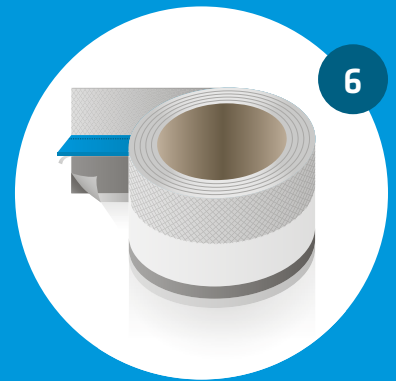
ADHESIVE TEST STRIPS



**EXTRA
BUTYL STRIP**



**ELASTIC
CORNER COMPENSATION
PROFILE**



**FLEXZARGE®
SCHNITTSCHUTZ® CUT-PRO-
TECTING MATERIAL**



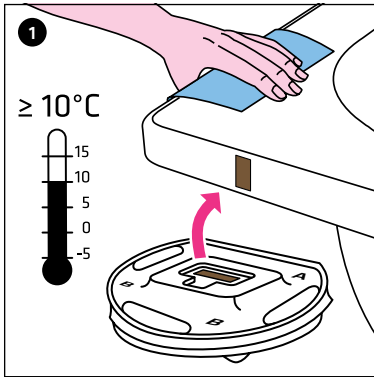
**HIGH-GRADE
BLADE CUTTER**



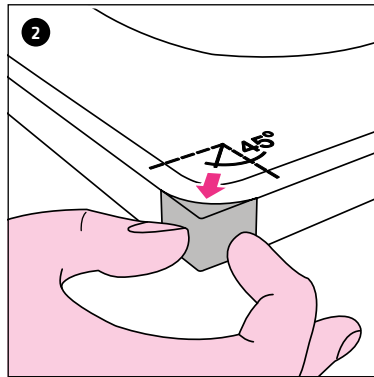
TRAINING

INSTALLATION INSTRUCTIONS FOR GABAG FLEXZARGE® SCHNITTSCHUTZ® CUT-PROTECTING MATERIAL

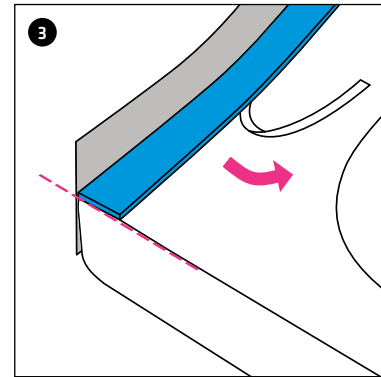
IMPORTANT NOTE: THE NICHE DIMENSION (BASE PLASTER/BASE PLASTER) MUST BE NO MORE THAN 1 CM LARGER THAN THE TUB/TRAY DIMENSION (DEPENDING ON THE TILE THICKNESS)



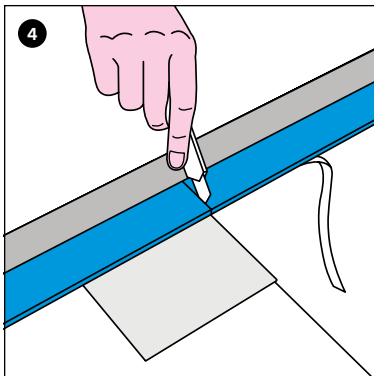
1 Rub the tub/tray edge thoroughly with a (moist) cleaning cloth, leave to air for 3 minutes and wipe off with a dry cloth: use an adhesive test strip to check whether the adhesive sticks. Do not use on sensitive surfaces.



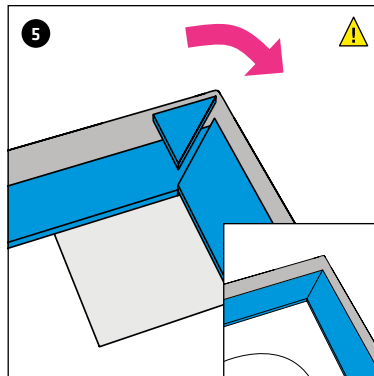
2 Apply the corner compensation profile to the edge of the tub/tray at an angle of 45°, only where the FLEXZARGE® will be applied later on. Remove the covering film on the outer side.



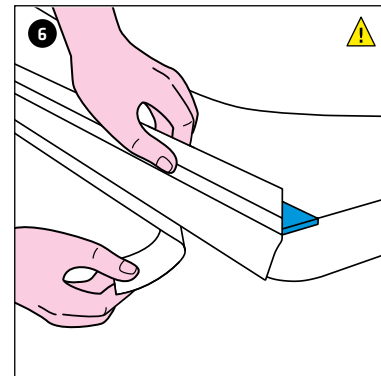
3 Hold GABAG FLEXZARGE® at a 90° angle to the tub/tray edge. FLEXZARGE® must be flush with the tub/tray edge. Pull the covering paper off from the underside and press the FLEXZARGE® onto the tub/tray.



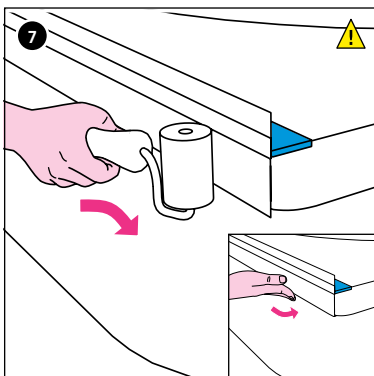
4 Using the cutter, make an incision into the blue soundproofing profile at the edge of the tub/tray. Place a piece of cardboard underneath for protection.



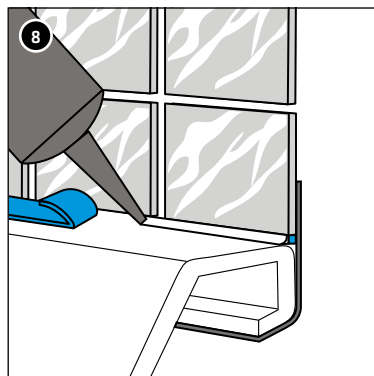
5 Position the FLEXZARGE® so that it fits squarely around the corner compensation profile. Mitre-cut the blue soundproofing profile, remove any remaining pieces and the tub/tray edge guard, and continue to install the soundproofing profile.



6 Pull the adhesive strip/covering film away from the grey butyl strip.



7 Using the back of your hand or a GABAG application roller, press the FLEXZARGE® firmly onto the edge of the tub/tray, paying special attention to the corners. Affix any projecting butyl strip under the edge of the tub/tray.



8 After tiling, pull the perforated blue profile away from the sealing strip and prepare the joint with silicone (e.g. Ottoseal® S100 or equivalent) to an adequate width. The remaining piece is used as joint backfill (round cord seal) and to absorb sound.



Due to the integrated metallic insert, the start and end of the flexible frame are very sharp and there is a risk of injury. Use an application roller to press on the tub/tray sealing strip. The application roller and scissors are available from GABAG.

VIDEO

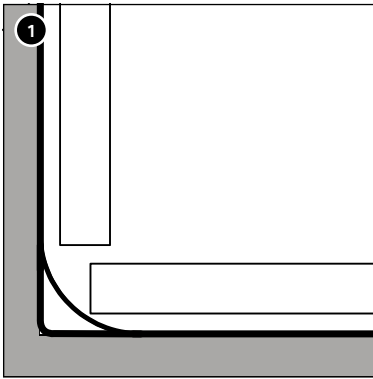


INSTALLATION INSTRUCTIONS FOR THE GABAG FLEXZARGE® ARE AVAILABLE AS A VIDEO AT:

[LINK WWW.GABAG.COM/FZ-DE](http://WWW.GABAG.COM/FZ-DE)

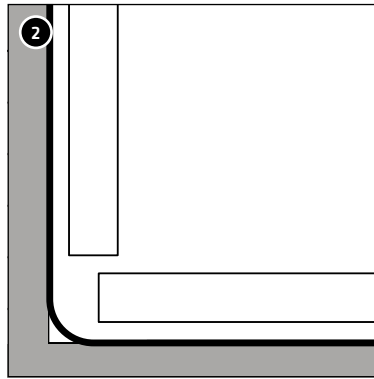


DETAILS FOR TILERS



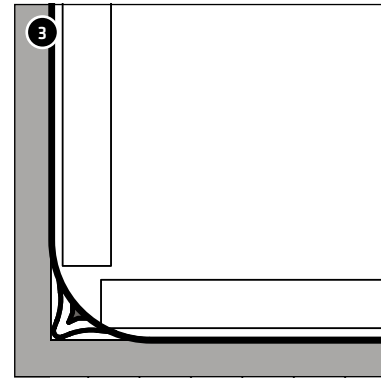
INSTALLATION VERSION WITH CORNER PROFILE

On tub/tray corners with a radius of more than 13 mm to 25 mm, there will be an adhesive bed of about 2–3 mm depending on the thickness of the tiles, installation situation and niche dimension.



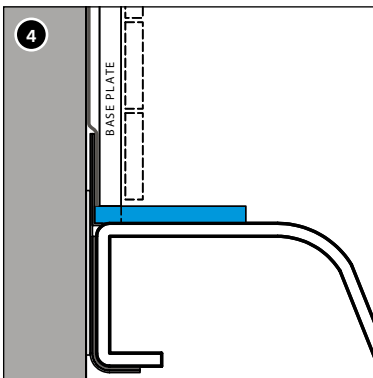
INSTALLATION VERSION WITHOUT CORNER PROFILE AND CRIMP

On tub/tray corners with a radius of up to 5 mm, no crimp is required, depending on the installation situation and niche dimension. Depending on the tile thickness, there will be an adhesive bed of 2–3 mm.



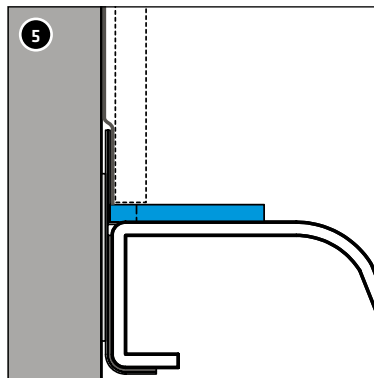
INSTALLATION VERSION WITH CRIMP

On tub/tray corners with a radius of less than 13 mm, there will be an adhesive bed of 2–3 mm depending on the thickness of the tiles.



DETAIL: SMALL TILES, MOSAIC OR COVERINGS, TILE DIMENSION < 20 MM

Glue a base plate over the whole area of the GABAG FLEXZARGE® or onto the wall.

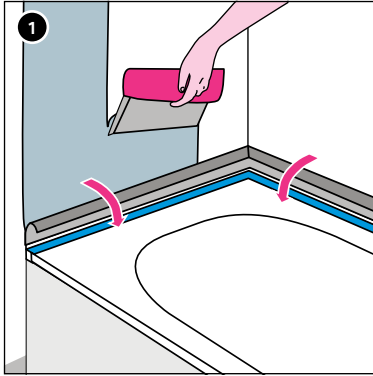


DETAIL: NORMAL TILES OR MOSAIC ≥ 20 MM

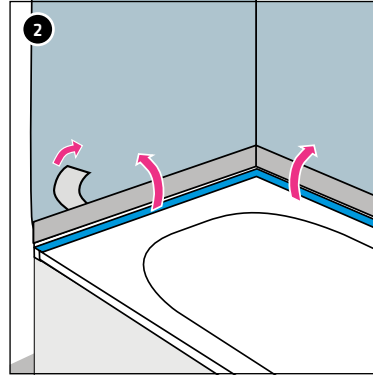
Depending on the tile thickness, apply an adhesive bed of approx. 2–3 mm, according to the installation version (see Figure 1 or Figures 2 and 3 respectively). For mosaic tiles ≥ 20 mm, please note our information at www.gabag.com regarding constructional requirements and possible detail structures.

INTRODUCING THE GABAG FLEXZARGE® INTO THE COMPOSITE SEAL

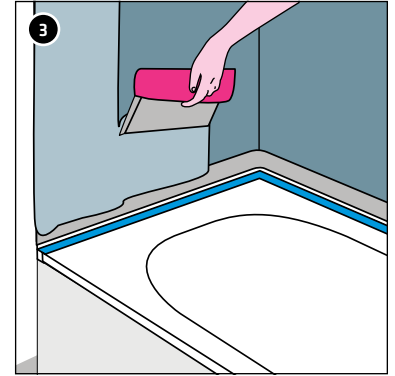
INFORMATION FOR SEALING TECHNICIANS OR TILERS



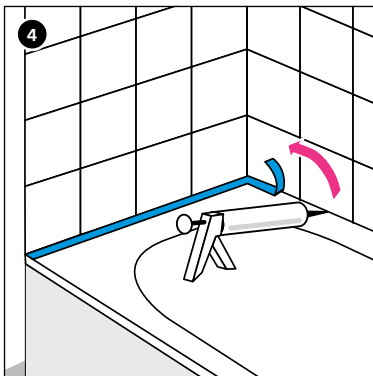
1 Fold the sealing strip down towards the tub/tray and apply the composite seal to the wall.



2 Pull off the cover paper on the rear of the sealing strip and bond it to the dried composite seal. Apply the sealing strip to the seal so that it is flat, with no air trapped inside.



3 Apply the second layer of composite seal on top of the affixed sealing strip.

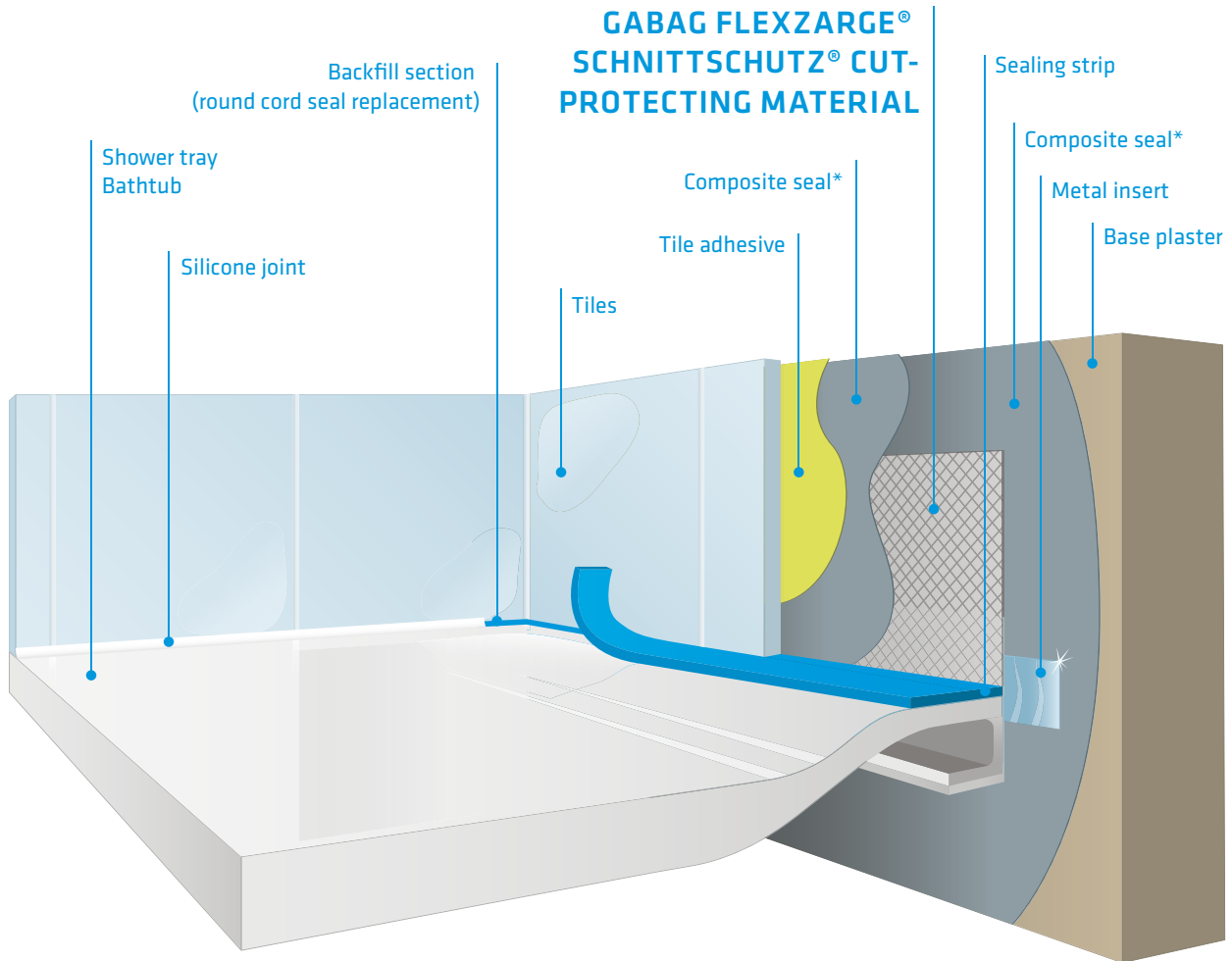


4 After tiling, pull off the perforated blue tub/tray edge guard profile and prepare the joint with silicone (e.g. Ottoseal® S100 or equivalent) to an adequate width. The remaining piece is used as joint backfill (round cord seal) and to absorb sound.

THE RESPONSIBLE SPECIALIST MUST CHECK THE CONDITION AND QUALITY OF THE BASE SURFACES ON THE WALL SIDE AND MUST PRE-TREAT THESE SURFACES AS APPROPRIATE.

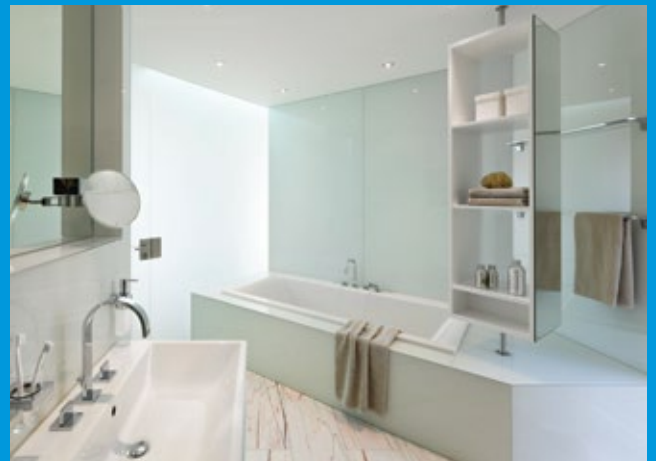
PLEASE NOTE THE INFORMATION ON THE NEXT PAGE.

APPLICATION EXAMPLE



* Sealing products from: Mapei, Codex, Murexin, PCI, Kerakoll, Weber-Marmoran
(test report available at: www.gabag.com)

GABAG ALSO OFFERS TUB/TRAY EDGE SEALING SOLUTIONS FOR INSTALLATION SITUATIONS OF THIS SORT



**PLEASE CONTACT US TO CLARIFY THE DETAILS.
WE SHALL BE HAPPY TO SUPPORT YOU WITH PLANNING
AND FINDING YOUR SOLUTION.**

WWW.GABAG.COM

ALTOGETHER CONVINCING
SANITARY TECHNOLOGY.



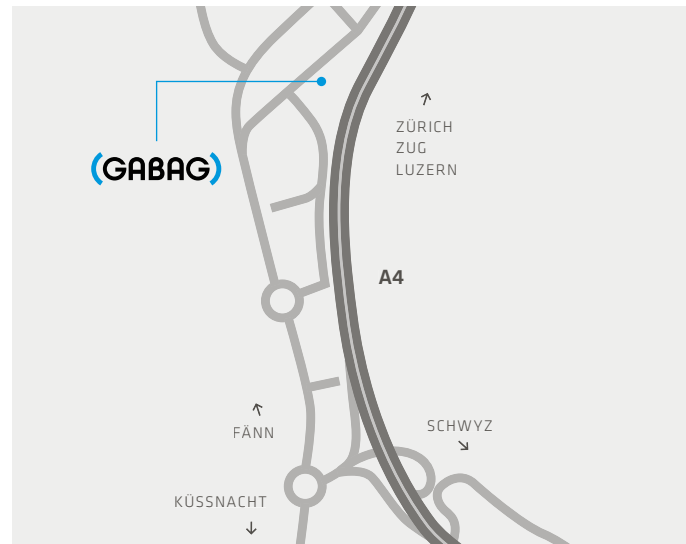
DE UNSERE BROSCHÜREN FINDEN SIE IN
FRANZÖSISCH UND ITALIENISCH AUF
WWW.GABAG.COM

FR NOTRES BROCHURES EN ALLEMAND
ET ITALIEN VOUS TROUVEZ AUSSI SUR
WWW.GABAG.COM

IT NOSTRI BROCHURI IN TEDESCO E
FRANCESE SI TROVANO ANCHE SU
WWW.GABAG.COM

GABAG FLEXZARGE® SCHNITTSCHUTZ® CUT-PROTECTING MATERIAL

8002.020	2.0	linear metres	8002.040	4.0	linear metres
8002.025	2.5	linear metres	8002.045	4.5	linear metres
8002.030	3.0	linear metres	8002.048	4.8	linear metres
8002.034	3.4	linear metres	8002.050	5.0	linear metres
8002.036	3.6	linear metres	8002.100	10.0	linear metres
8002.038	3.8	linear metres			



ROUTE DESCRIPTION

TAKE THE KÜSSNACHT EXIT FROM THE AUTOBAHN;
AT THE FIRST ROUNDABOUT, TAKE THE EXIT ON THE RIGHT
(SIGNPOSTED TO FÄNN); AT THE SECOND ROUNDABOUT,
GO STRAIGHT AHEAD; TURN RIGHT FOR "FÄNN OST";
OUR PREMISES ARE ABOUT 150 METRES FURTHER ON THE RIGHT.

WELCOME!

VISIT OUR ON-SITE SHOWROOM.
(PLEASE NOTIFY US IN ADVANCE)