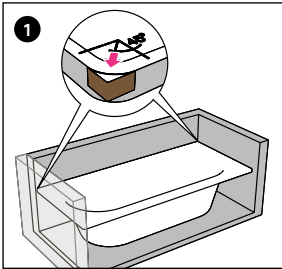
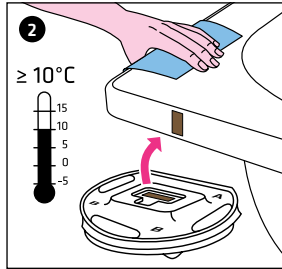


# INSTALLATION INSTRUCTIONS FOR GABAG FLEXZARGE® SCHNITTSCHUTZ® CUT-PRO- TECTING MATERIAL

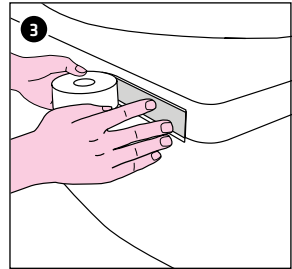
**IMPORTANT NOTE:** THE NICHE DIMENSION (BASE PLASTER / BASE PLASTER) MUST BE NO MORE THAN 1 CM LARGER THAN THE TUB/TRAY DIMENSION (DEPENDING ON THE TILE THICKNESS)



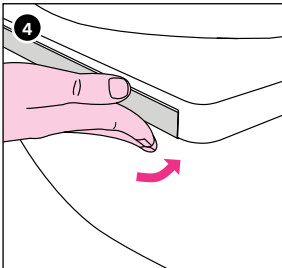
Now with corner compensation profile to adapt the tray/tub edge to the niche.



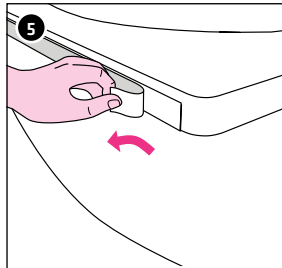
Rub the tub/tray edge thoroughly with a (moist) cleaning cloth, leave to air for 3 minutes and wipe off with a dry cloth: use an adhesive test strip to check whether the adhesive sticks. Do not use on sensitive surfaces.



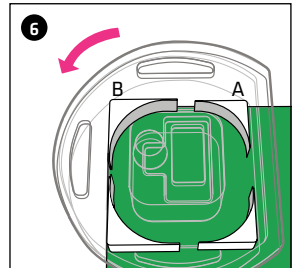
Apply the butyl strip (supplied with the product) in one piece, flush with the upper edge of the tub/tray. Apply it around the radius at the edge of the tub/tray. Only fit the butyl strip where GABAG FLEXZARGE® will be applied later on.



Place the butyl strip under the tub/tray edge and press everything together firmly.



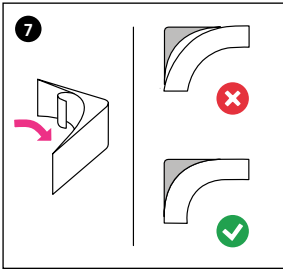
Remove the covering film.



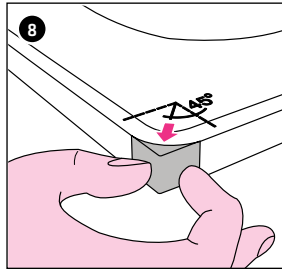
Each set contains two pairs of corner compensation profiles, A for a small tub/tray radius and B for a large radius.



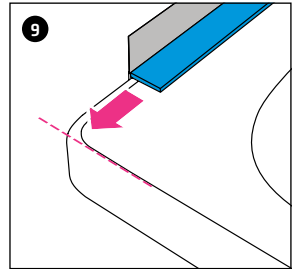
Due to the integrated metallic insert, the start and end of the flexible frame are very sharp and there is a risk of injury. Use an application roller to press on the tub/tray sealing strip. The application roller and scissors are available from GABAG.



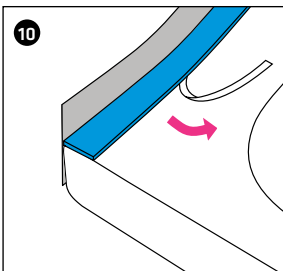
Select the corner compensation profile that matches the tub/tray edge. The corner profile must be flush with the tub/tray edge. Remove the covering film on the inner side.



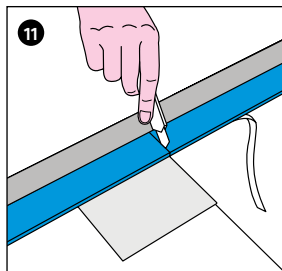
Apply the corner compensation profile to the edge of the tub/tray at an angle of 45°, only where the FLEXZARGE® will be applied later on. Remove the covering film on the outer side.



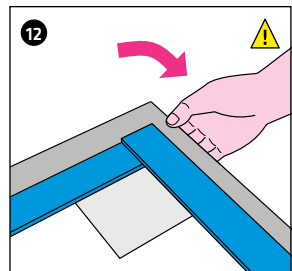
Hold GABAG FLEXZARGE® at a 90° angle to the tub/tray edge. FLEXZARGE® must be flush with the tub/tray edge.



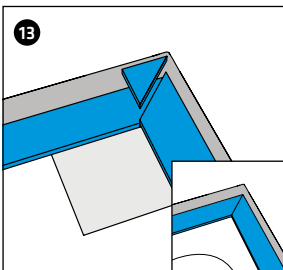
Pull the covering paper off from the underside and press the FLEXZARGE® onto the tub/tray.



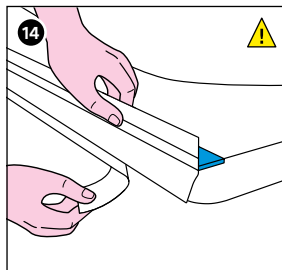
Using the cutter, make an incision into the blue soundproofing profile at the edge of the tub/tray. Place a piece of cardboard underneath for protection.



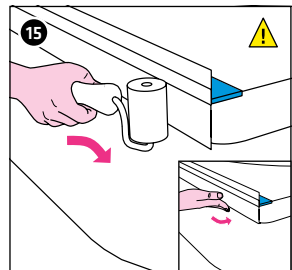
Position the FLEXZARGE® so that it fits squarely around the corner profile.



Mitre-cut the blue soundproofing profile, remove any remaining pieces and the tub/tray edge guard, and continue to install the soundproofing profile.



Pull the adhesive strip/covering film away from the grey butyl strip.



Using the back of your hand or a GABAG application roller, press the FLEXZARGE® firmly onto the edge of the tub/tray, paying special attention to the corners. Affix any projecting butyl strip under the edge of the tub/tray.